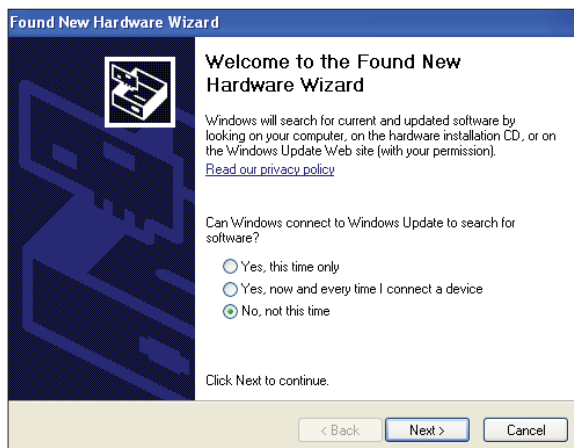


USB Serial Converter Driver Installation for Windows® XP

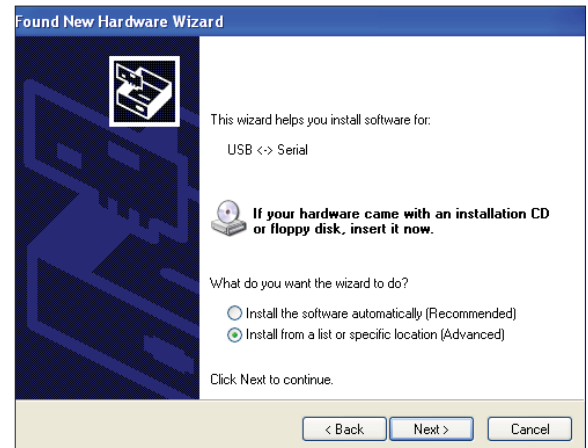
CAUTION: You must use the drivers on the CD-ROM supplied with your USB Device. **DO NOT** download drivers from the FTDI website, because they will not work for the device!

NOTE: If for any reason you cancel out of the New Hardware Wizard before installing the USB drivers or if you receive an error message during installation, the drivers will not be installed. You must then install the drivers using the directions in the XP Troubleshooting Section on page 5.

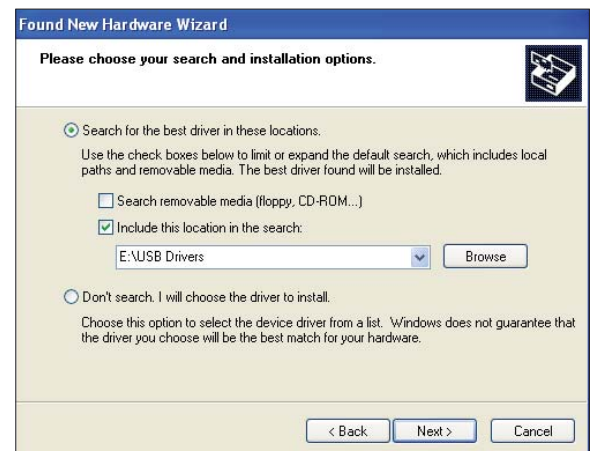
1. *Plug* the USB cable attached to your device into your computer's USB port.
2. *Insert* the USB Drivers CD-ROM into your CD-ROM drive.
3. A message should pop up from the toolbar that reads, "Found New Hardware." *Click* on the Found New Hardware Wizard application from the toolbar.
4. The window that appears will ask the question, "Can Windows connect to Windows Update to search for software?" as shown below. *Select* "No, not this time" and *click* <Next>.



5. The next window that appears will ask, "What do you want the wizard to do?" *Select* "Install from a list or specific location (Advanced)" as shown below and *click* <Next>.



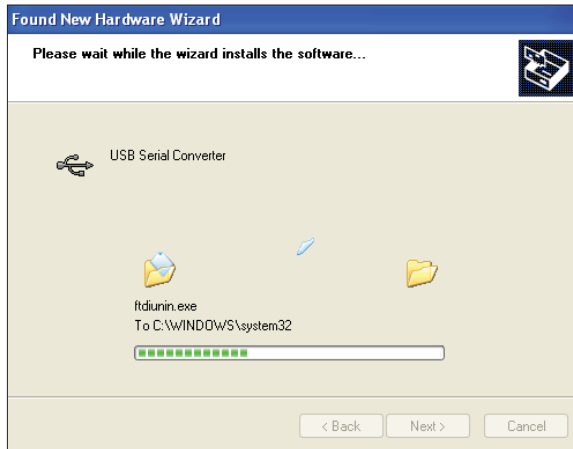
6. In the next window that appears, *select* the radio button in front of the option "Search for the best driver in these locations." *Uncheck* the box that reads, "Search removable media" and instead *check* the box "Include this location in the search:"



7. *Click* <Browse> and locate the drive that your CD-ROM is located on. *Click* <Next>.

USB Driver Installation for Windows® XP

- The screen will now state, “Please wait while the wizard installs the software...”



- While the files are downloading, a *Hardware Installation Window* might pop up as shown below. Click <Continue Anyway>.



- The wizard will then finish installing the software.

- Once the wizard is done, click <Finish>.

USB Serial Port Driver Installation for Windows® XP

- Once the USB Serial Converter software is installed, the Found New Hardware Wizard will appear again to download the USB Serial Port software.
- Follow steps 1 through 7 of the previously described USB Serial Converter Installation instructions (page 1).
- Click <Finish> when the wizard is done downloading the software.
- Windows® XP requires you to restart your computer before the new settings will take effect.
- Continue with the next section “Finding What COM Port Number your USB device is Using” on page 3.

Finding What COM Port Number Your USB Device Is Using

1. *Left-click* on <Start>, located on the bottom left of the Windows Tool Bar.



2. *Select* <Control Panel>.



3. *Double-click* the System Icon.



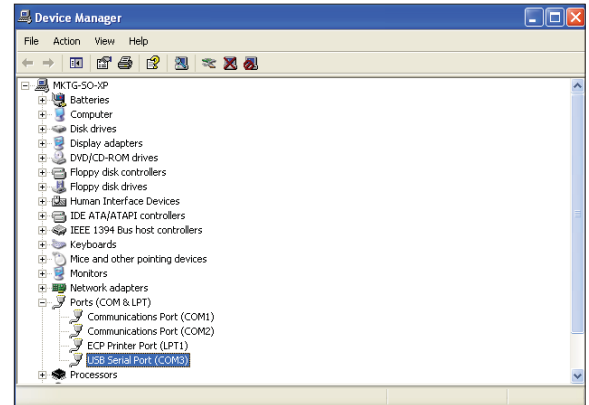
System

4. *Click* the <Hardware> tab.



5. *Click* the <Device Manager> button.

6. *Click* on the plus sign next to Ports to see all of the common ports.



7. *Locate* the USB Serial Port (COM#). The COM# in parentheses is the port it is located on. *Write* this COM port number down. You will need to know this when setting up the Prism software.

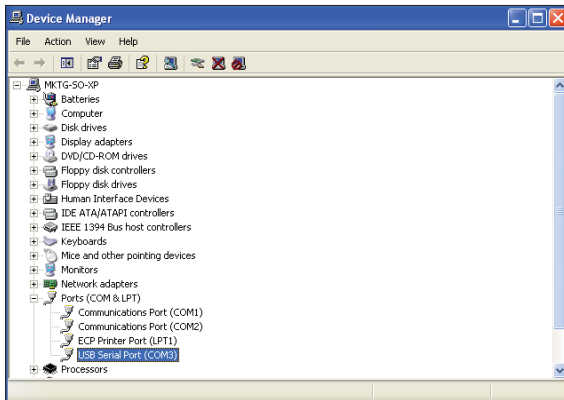
8. If the COM port number is 10 or greater, go to “Changing the USB COM Port Number” on page 4.

Troubleshooting the COM Port Number

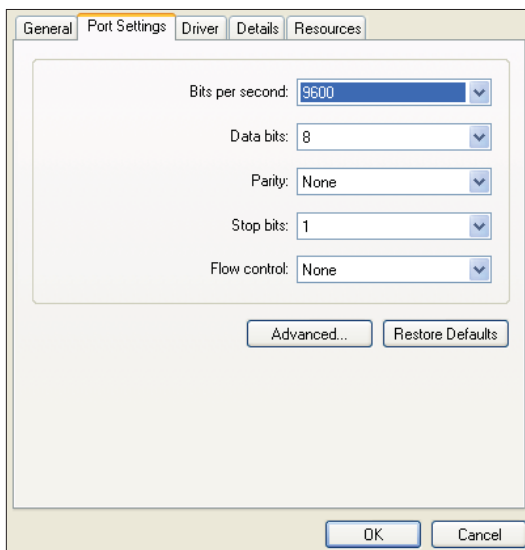
Changing the USB COM Port Number

When your USB device is first plugged in, it will be assigned a COM port number to be used for communicating with the Prism software. If the port number is 10 or greater, it needs to be changed to a value less than 10 to be recognized by Prism.

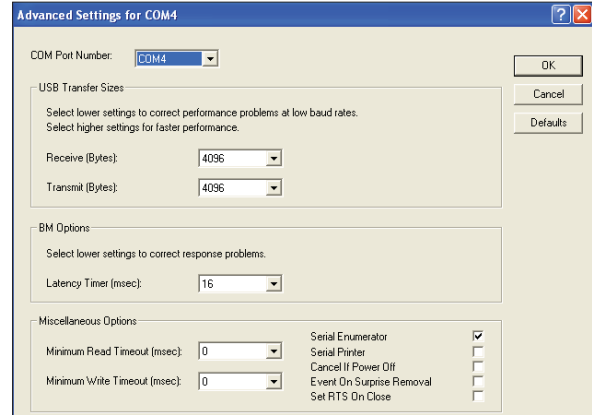
1. Click <Start>, click <Control Panel>, click <System>, click the <Hardware> tab, and then click <Device Manager> to get to the *Device Manager Window*.
2. Click on the plus sign next to Ports to see all of the COM ports.



3. Right-click on “USB Serial Port (COM#)” and select <Properties>. In the *Properties Window*, select the <Port Settings> tab.



4. To assign a port number less than 10, click on <Advanced>. The *Advanced Settings Window* will appear.



5. In the COM Port Number drop box, select which COM port you wish to use. Make sure you select a COM port number that is not currently in use (you can see the ports in use in the *Device Manager Window*). Select a port that is less than 10.

NOTE: Windows® will assign a port number to every device that has ever been installed on your computer. So if there are no available ports below 10, choose a port number less than 10 for a device listed that you know you are not currently using.

6. Once you select the correct COM port number, click <OK> and close any windows opened in the process of changing the port number. Make note of this number because you will need it for your Prism setup.

Troubleshooting the USB Drivers for Windows® XP

If the *Found New Hardware Window* did not appear when you plugged in your USB device or if you canceled out of the installation procedure for any reason, you will have to follow these instructions to install the USB drivers.

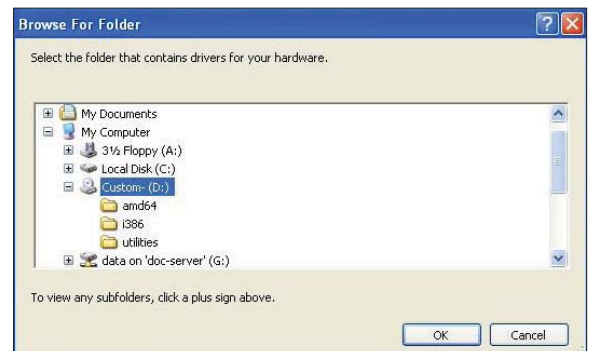
1. Plug the USB cable attached to your USB device into your computer's USB port.
2. Click <Start>, click <Control Panel>, and then double-click <System>. The *System Properties Window* will appear. Click the <Hardware> tab and then click <Device Manager>.



3. The *Device Manager Window* will appear. In this window, look for an exclamation point in the categories, "Other devices," "Ports," or "Universal Serial Bus controllers." Click the item containing the exclamation point.



4. Right-click on USB Serial Port and then click <Update Driver>. The *Hardware Update Window* will appear.
5. In response to the question, "Can Windows search for software?" click the radio button, "No, not at this time" and then click <Next>. Insert your USB Drivers CD-ROM into your CD-ROM drive. And then click the radio button, "Install from a list or specific location" and click <Next>.
6. The screen will now display the message, "Search for driver software in this location:" If the location is correct, click <Next> and go to step 8. If not, click <Browse>.
7. Select the CD-ROM location from the list of folders and then click <OK>.



8. A message will appear that states, "Please wait while the wizard installs the software..."
9. When the installation is complete, the window below will appear. Click <Finish>.

